

Pressure Relief Valve

Model 7000L/7200L

WWW.AGFMFG.COM

Lockable Pressure Relief Valves

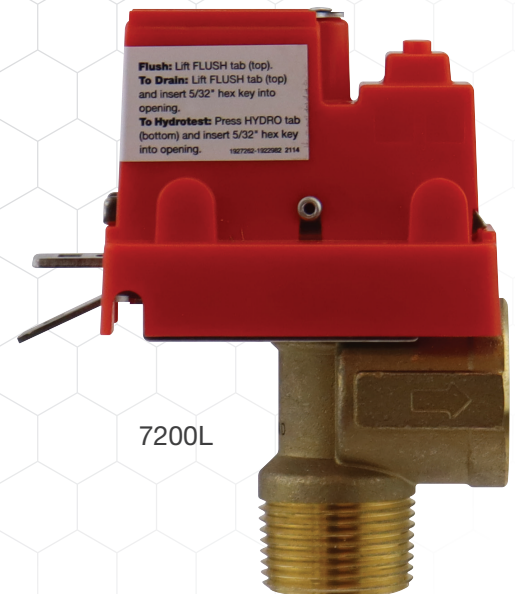
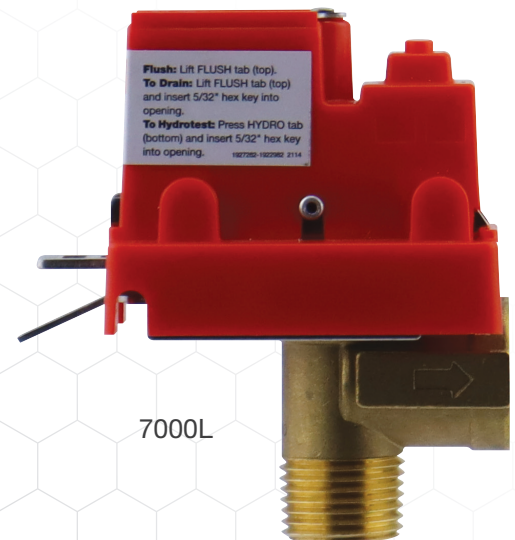
AGF Manufacturing Model 7000L and 7200L pressure relief valves comply with the requirements of NFPA 13 that stipulates a pressure relief valve must be installed on all wet fire sprinkler systems downstream of any pressure reducing valve. Both models relieve excess system pressure caused by surges or temperature changes. They include a bronze body and stainless steel spring housed in a plastic casing that allows the user to temporarily lock it closed to perform hydrostatic testing, without removing the valve from the system.

The Model 7000L has a ½" MIPT inlet and FIPT outlet and is optional on our TESTANDRAIN models 1011A, 1011T, 2511A, and 2511T assemblies. The Model 7200L has a ¾" MIPT inlet and FIPT outlet and is optional with our 1" Residential RiserPACK Model 8011. Both models are UL Listed and FM Approved, and come factory set at 175 PSI. The Model 7000L is also available in 225 and 300 PSI.

Features:

- Lock Closed to allow Hydrostatic Testing without Removing the Pressure Relief Valve from the System
- UL Listed
- FM Approved
- Factory-Set PSI:
 - Tested for Accuracy in Desired Range
 - Resistant to Tampering
 - Quickly Open to Flush Leak-Causing Debris

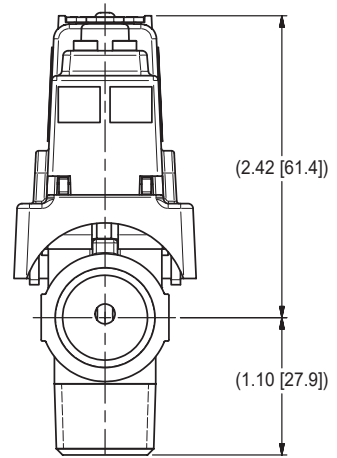
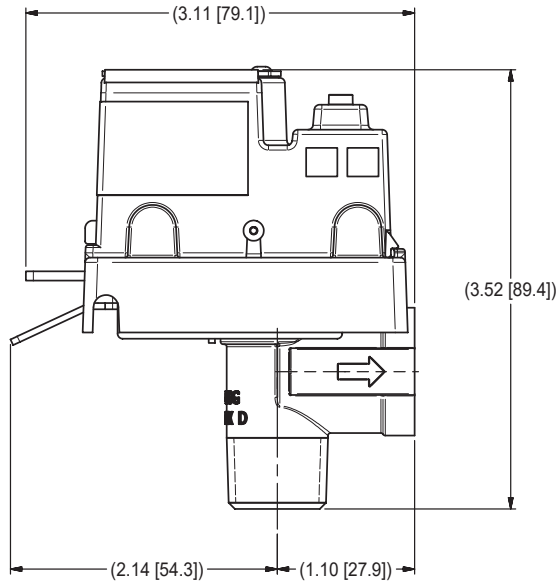
NOTE: UL and FM standards for sprinkler system pressure relief valves require relief valves to operate within a range of their ratings. FM requires a relief valve to OPEN at a pressure no less than 85% of their rating and UL requires OPENING at a pressure no greater than 105% of their rating. Both standards require the relief valves to CLOSE within a percentage below OPEN. Choose the relief valve comparing static pressure to 90% of the relief valve's rating to determine the estimated minimum OPENING and 80% of the relief valve's rating for approximate maximum CLOSING. The relief valve should be installed where it is easily accessible for maintenance. Care should be taken that the relief valve CANNOT be isolated from the system when the system is operational. A relief valve should NEVER have a shutoff valve or a plug downstream of its outlet.



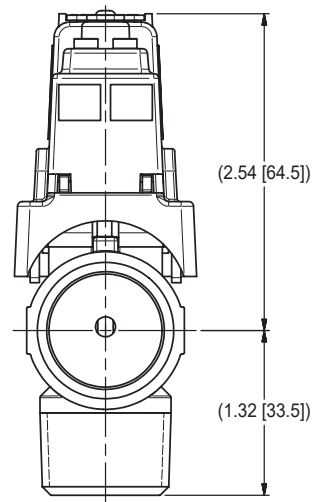
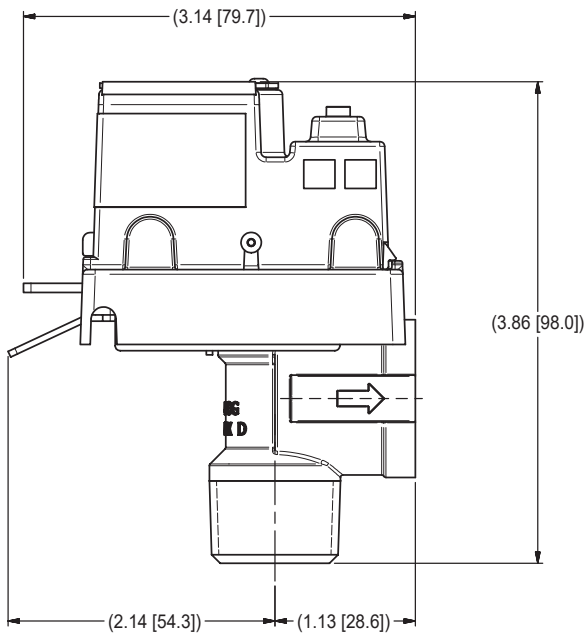
Reliability, Versatility, Code Compatibility

Dimensions

7000L



7200L



AGF Manufacturing Inc.
100 Quaker Lane, Malvern, PA 19355
Phone: 610-240-4900
Fax: 610-240-4906
www.agfmfg.com

Job Name: _____
Architect: _____
Engineer: _____
Contractor: _____