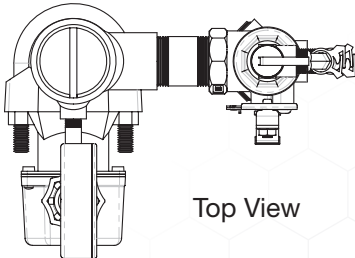


RISERPACK®

Model 8611

WWW.RISERPACK.COM



Top View

Corner Mount RISERPACK

The AGF Commercial RISERPACK™ Model 8611 is a compact pre-packaged economical riser assembly designed for NFPA 13 wet fire sprinkler systems. Every model utilizes an appropriate sized UL Listed/FM Approved patented AGF Model 1011 TEST_{AND}DRAIN® valve designed to comply with NFPA 13 requirements requiring a sight glass for verification during testing through a properly sized orifice. All RISERPACKS™ are assembled with UL Listed/FM Approved AGF Model 7500 Pressure Gauge (300 PSI), Model 7600 ¼" Universal Valve, and a Saddle Mount Water Flow Switch as required by NFPA 13. The Model 8611 includes UL Listed/FM Approved AGF Model 7000 Pressure Relief Valve (175 Rated); other ratings are available and may be substituted: 165, 185, 195, 205, 225, or 250.

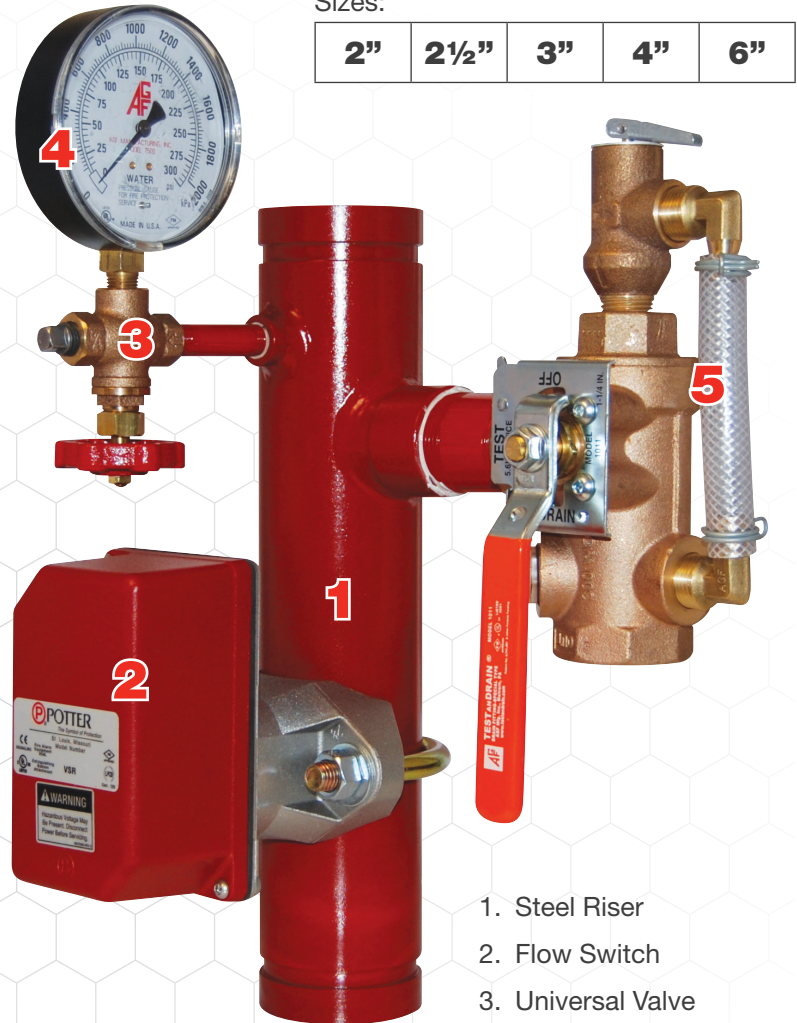
- Corner Mount
- Horizontal or Vertical Installation
- 300 PSI rating

The Model 1000/1011 TEST_{AND}DRAIN® valve offers a unique design benefit that allows system access through the valve for system integrity testing and/or installation of the optional relief valve trim kit (Model 8011) without draining the system.

NOTE: UL and FM standards for sprinkler system pressure relief valves require relief valves to operate within a range of their ratings. FM requires a relief valve to OPEN at a pressure no less than 85% of their rating and UL requires OPENING at a pressure no greater than 105% of their rating. Both standards require the relief valves to CLOSE within a percentage below OPEN. Choose the relief valve comparing static pressure to 90% of the relief valve's rating to determine the estimated minimum OPENING and 80% of the relief valve's rating for approximate maximum CLOSING. The relief valve should be installed where it is easily accessible for maintenance. Care should be taken that the relief valve CANNOT be isolated from the system when the system is operational. A relief valve should NEVER have a shutoff valve or a plug downstream of its outlet.

Sizes:

2"	2½"	3"	4"	6"
----	-----	----	----	----

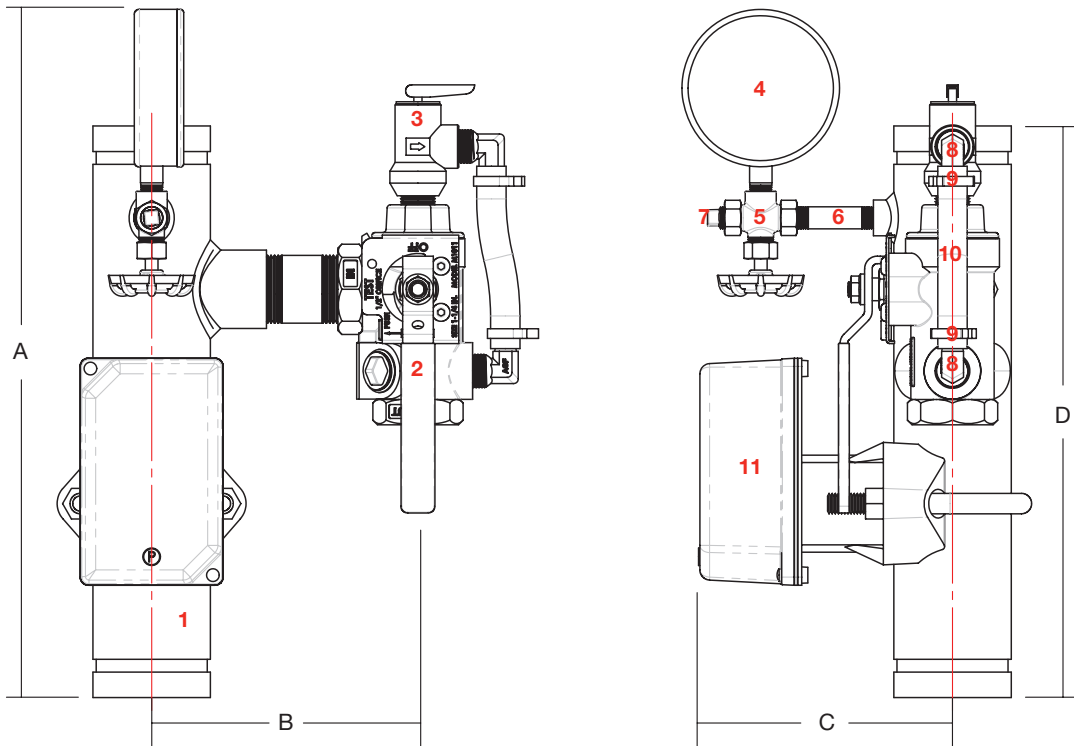


1. Steel Riser
2. Flow Switch
3. Universal Valve
4. Pressure Gauge
5. TEST_{AND}DRAIN M1011A



Reliability, Versatility, Code Compatibility

Model 8611 Dimensions



Dimensions

SIZE	A	B	C	D
2"	17 $\frac{1}{8}$ " (435 mm)	5 $\frac{1}{2}$ " (140 mm)	5 $\frac{3}{4}$ " (146 mm)	14" (356 mm)
2 $\frac{1}{2}$ "	17 $\frac{1}{8}$ " (435 mm)	6 $\frac{1}{2}$ " (165mm)	6" (152 mm)	14" (356 mm)
3"	17 $\frac{1}{8}$ " (435 mm)	6 $\frac{7}{8}$ " (175 mm)	6 $\frac{3}{8}$ " (149 mm)	14" (356 mm)
4"	17 $\frac{1}{8}$ " (435 mm)	7 $\frac{1}{8}$ " (181 mm)	6 $\frac{7}{8}$ " (175 mm)	14" (356 mm)
6"	17 $\frac{1}{8}$ " (435 mm)	8 $\frac{1}{4}$ " (210 mm)	7 $\frac{7}{8}$ " (200 mm)	14" (356 mm)

Dimensions have been rounded to the nearest 1/8".

Confirm that enough space is left between the RISERPACK™ and any obstructions to move handle of M1011 TEST_{AND}DRAIN® valve into the "TEST" position and into the "DRAIN" position.

Components

Item No.	Part	Qty.
1	RiserPACK - Sch. 40 Powdercoated	1
2	M1011 TEST _{AND} DRAIN Valve	1
3	M7000 Pressure Relief Valve	1
4	M7500 Pressure Gauge	1
5	M7600 1/4" Universal Valve	1
6	Steel Nipple	1
7	1/4" Plug	1
8	1/2" Brass NPT x Barb 90° Elbow	2
9	Clamps	2
10	Nylobraid Drain Tubing	1
11	Saddle Mount Water Flow Switch	1



Patent Pending



AGF Manufacturing Inc.
 100 Quaker Lane, Malvern, PA 19355
 Phone: 610-240-4900
 Fax: 610-240-4906
www.agfmanufacturing.com

Job Name: _____

Architect: _____

Engineer: _____

Contractor: _____