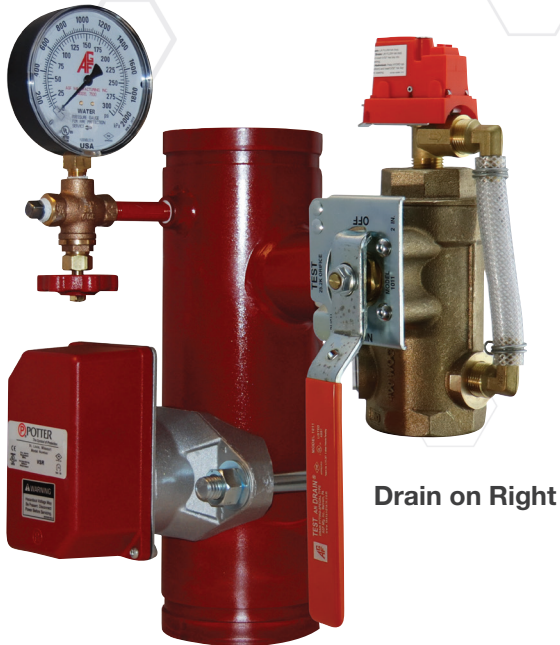


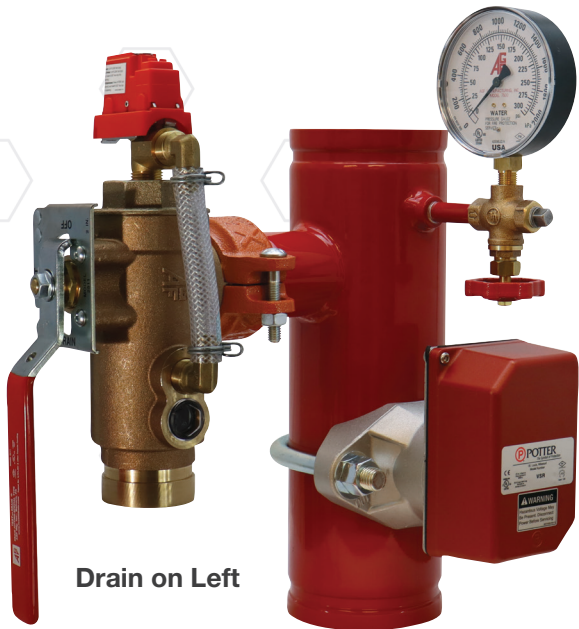
RISERPACK®

Model 8611

QUALITY COMPONENTS FOR FIRE SPRINKLER SYSTEMS



Drain on Right



Drain on Left

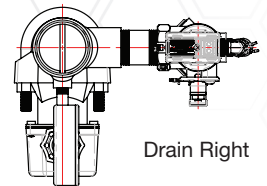
Corner Mount RiserPACK

The AGF Commercial RiserPACK Model 8611 is a 300 PSI rated, pre-assembled riser designed to accommodate corner mount installations on NPFA 13 wet pipe fire sprinkler systems. The Model 8611 can be ordered with the Drain on Right or the Drain on Left for additional installation flexibility.

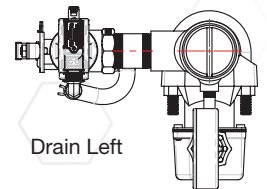
Features

- NFPA 13 Compliant
- Corner Mount
- 2", 2½", 3", 4", and 6" Sizes
- Orifice Options (2.8K—25.2K)
- Schedule 10 (Sch. 40 Available)
- Rolled Groove Connections
- 300 PSI Rated
- Vertical or Horizontal Installation

Top View



Drain Right



Drain Left

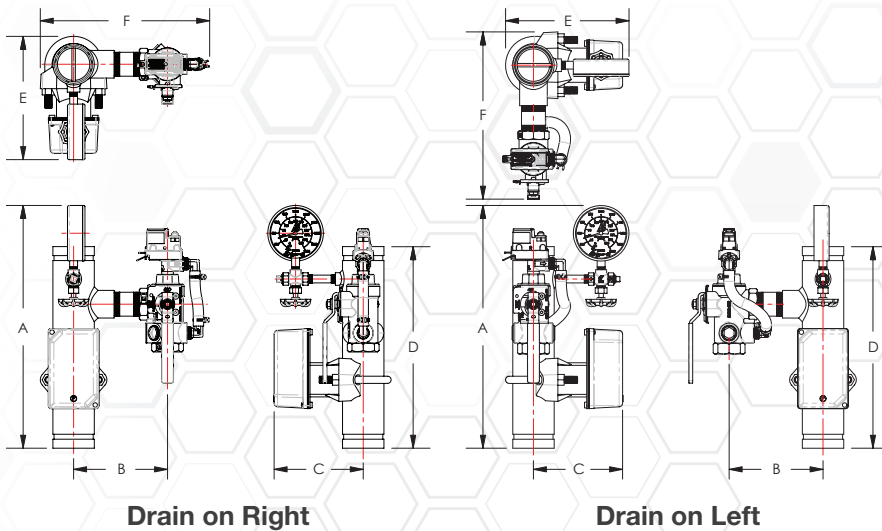
Models

		Model 8611 Part Numbers						
		Orifice Size		2"	2½"	3"	4"	6"
Drain	K-Factor	Fractional						
Drain on Right	2.8	3/8"	8655A-L	8660A-L	8670A-L	8680A-L	8690A-L	
	4.2	7/16"	8656A-L	8661A-L	8671A-L	8681A-L	8691A-L	
	5.6	1/2"	8657A-L	8662A-L	8672A-L	8682A-L	8692A-L	
	8.0	17/32"	8658A-L	8663A-L	8673A-L	8683A-L	8693A-L	
	11.2 (ELO)	5/8"	8659A-L	8664A-L	8674A-L	8684A-L	8694A-L	
	14.0 (ESFR)	3/4"	-	8665A-L	8675A-L	8685A-L	8695A-L	
	25.2	-	-	-	-	8686A-L	8696A-L	
Drain on Left	2.8	3/8"	8655LDG	8660LDG	8670LDG	8680LDG	8690LDG	
	4.2	7/16"	8656LDG	8661LDG	8671LDG	8681LDG	8691LDG	
	5.6	1/2"	8657LDG	8662LDG	8672LDG	8682LDG	8692LDG	
	8.0	17/32"	8658LDG	8663LDG	8673LDG	8683LDG	8693LDG	
	11.2 (ELO)	5/8"	8659LDG	8664LDG	8674LDG	8684LDG	8694LDG	
	14.0 (ESFR)	3/4"	-	8665LDG	8675LDG	8685LDG	8695LDG	
	25.2	-	-	-	-	8686LDG	8696LDG	

Most Popular Models



Dimensions



	Size	A	B	C	D	E	F
Drain on Right	2"	16 ⁷ / ₈ " (428 mm)	5 ⁵ / ₈ " (137 mm)	6 ¹ / ₄ " (157 mm)	14" (356 mm)	8 ¹ / ₄ " (210 mm)	10 ⁵ / ₈ " (265 mm)
	2½"	16 ⁷ / ₈ " (428 mm)	6 ¹ / ₂ " (166 mm)	6 ¹ / ₄ " (157 mm)	14" (356 mm)	8 ⁵ / ₈ " (218 mm)	11 ³ / ₄ " (297 mm)
	3"	16 ⁷ / ₈ " (428 mm)	6 ⁷ / ₈ " (174 mm)	6 ¹ / ₂ " (165 mm)	14" (356 mm)	9 ¹ / ₄ " (233 mm)	12 ¹ / ₂ " (318 mm)
	4"	16 ⁷ / ₈ " (428 mm)	7 ¹ / ₄ " (183 mm)	7" (178 mm)	14" (356 mm)	10 ¹ / ₄ " (259 mm)	13 ³ / ₄ " (348 mm)
	6"	16 ⁷ / ₈ " (428 mm)	8 ¹ / ₄ " (210 mm)	8 ¹ / ₈ " (205 mm)	14" (356 mm)	12 ³ / ₈ " (313 mm)	15 ⁵ / ₈ " (402 mm)
Drain on Left	2"	16 ⁷ / ₈ " (428 mm)	5 ⁵ / ₈ " (150 mm)	6 ¹ / ₄ " (157 mm)	14" (356 mm)	8 ¹ / ₄ " (210 mm)	10 ⁵ / ₈ " (269 mm)
	2½"	16 ⁷ / ₈ " (428 mm)	6 ¹ / ₂ " (166 mm)	6 ¹ / ₄ " (157 mm)	14" (356 mm)	8 ⁵ / ₈ " (218 mm)	11 ⁵ / ₈ " (295 mm)
	3"	16 ⁷ / ₈ " (428 mm)	6 ⁷ / ₈ " (174 mm)	6 ¹ / ₂ " (165 mm)	14" (356 mm)	9 ¹ / ₄ " (233 mm)	12 ¹ / ₂ " (318 mm)
	4"	16 ⁷ / ₈ " (428 mm)	7" (178 mm)	7" (178 mm)	14" (356 mm)	10 ¹ / ₄ " (259 mm)	15" (383 mm)
	6"	16 ⁷ / ₈ " (428 mm)	9" (230 mm)	8 ¹ / ₈ " (205 mm)	14" (356 mm)	12 ³ / ₈ " (313 mm)	17 ¹ / ₈ " (437 mm)

Sizes have been rounded to the highest millimeter

- Drain to Right RISERPACK models feature a TEST_{AND}DRAIN Model 1011 with THD x THD inlet and outlet ports.
- Drain to Left RISERPACK models feature a TEST_{AND}DRAIN Model 2511 with THD x THD (2"-3") or GRV x GRV (4" and 6") inlet and outlet ports.

NOTE: UL and FM standards for sprinkler system pressure relief valves require relief valves to operate within a range of their ratings. FM requires a relief valve to OPEN at a pressure no less than 85% of their rating and UL requires OPENING at a pressure no greater than 105% of their rating. Both standards require the relief valves to CLOSE within a percentage below OPEN. Choose the relief valve comparing static pressure to 90% of the relief valve's rating to determine the estimated minimum OPENING and 80% of the relief valve's rating for approximate maximum CLOSING. The relief valve should be installed where it is easily accessible for maintenance. Care should be taken that the relief valve CANNOT be isolated from the system when the system is operational. A relief valve should NEVER have a shutoff valve or a plug downstream of its outlet.

USA Patent and Other Patents Pending

For use on wet fire sprinkler systems.

Manifold Sizes

2", 2½", 3", 4", and 6"

Orifice Options

2.8K, 4.2K, 5.6K, 8.0K, 11.2K (ELO),
14.0K (ESFR), and 25.2K

Connections

Inlet.....Groove
Outlet.....Groove

Installation Orientation

Horizontal
Vertical

Electrical Requirements

None

Rating

300 PSI

Compliance

NFPA 13
NYC-BSA No. 720-87-SM

Approvals

UL/ULC (EX27218, EX4019,
EX4533 & EX6266)
FM



AGF Manufacturing Inc.
100 Quaker Lane, Malvern, PA 19355

Phone: 610-240-4900
Fax: 610-240-4906

www.agfmfg.com

Job Name: _____

Architect: _____

Engineer: _____

Contractor: _____