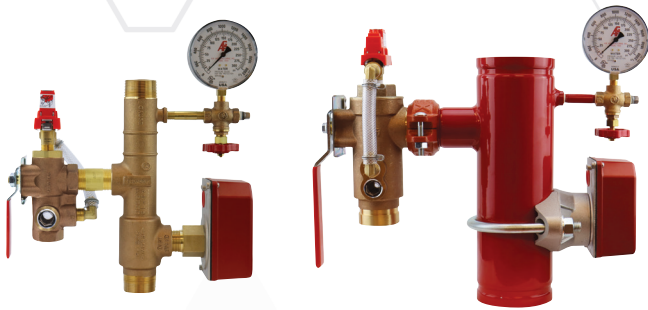


# RISERPACK®

## Commercial Model 8000/8011

QUALITY COMPONENTS FOR FIRE SPRINKLER SYSTEMS

**Model 8011**  
Includes Pressure Relief Valve and Drain Trim



**Model 8000**



### Commercial TEST<sub>AND</sub>DRAIN Risers

AGF Commercial RISERPACK Model 8000 and Model 8011 are 300 PSI rated, pre-assembled risers and floor control assemblies designed for NFPA 13 wet pipe fire sprinkler systems.

RISERPACK models come in a full range of sizes (1¼”-8”). 1¼” to 2” manifolds are cast bronze with THD x THD, THD x GRV, or GRV x GRV connections. 2”-8” manifolds are powder coated, schedule 10 steel with rolled grooves (schedule 40 steel manifolds with cut grooves are also available). Both models include a standard water flow switch, pressure gauge with 3-way universal gauge valve, and a Model 2500 or 2511 TEST<sub>AND</sub>DRAIN valve. TEST<sub>AND</sub>DRAIN valves allow system access for integrity testing, and offer a full-range of orifice sizes (K2.8-K25.2).

8011 models include a UL listed/FM approved, 175 PSI rated Model 7000L pressure relief valve with drain trim (200, 225, and 300 PSI ratings are also available). The Model 7000L pressure relief valve features a temporary system lock-out, which allows it to be closed with a hex wrench or lock-out tag during hydrostatic testing so it does not have to be removed from the system.

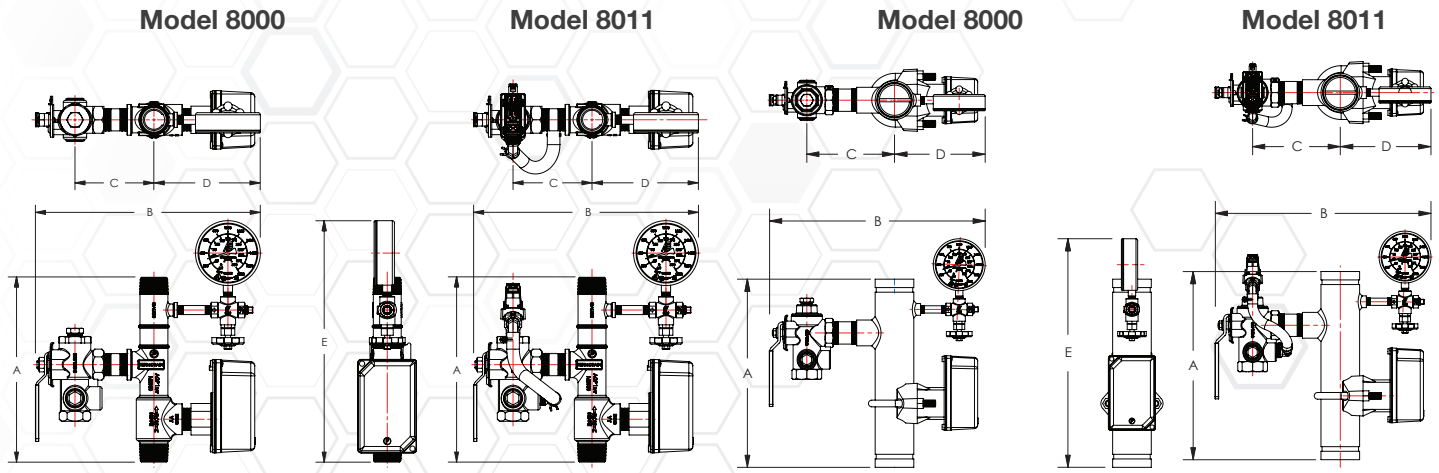
### Models

Orifice Size		Commercial RiserPACK Part Numbers																									
		BRONZE												STEEL													
		1¼"				1½"				2"				2"	2½"	3"		4"		6"	8"						
K-Factor	Fractional	Thd		Thd		Thd x Grv		Grv		Thd		Thd x Grv		Grv		Grv											
		8000	8011	8000	8011	8000	8011	8000	8011	8000	8011	8000	8011	8000	8011	8000	8011	8000	8011	8000	8011	8000	8011	8000	8011		
2.8	3/8"	8310A	8410A	8320A	8420A	8325A	8425A	8330A	8430A	8340A	8440A	8345A	8445A	8350A	8450A	8355A	8455A	8360A	8460A	8370A	8470A	8380A	8480A	8390A	8490A	8398A-28	8498A-28
4.2	7/16"	8311A	8411A	8321A	8421A	8326A	8426A	8331A	8431A	8341A	8441A	8346A	8446A	8351A	8451A	8356A	8456A	8361A	8461A	8371A	8471A	8381A	8481A	8391A	8491A	8398A-42	8498A-42
5.6	1/2"	8312A	8412A	8322A	8422A	8327A	8427A	8332A	8432A	8342A	8442A	8347A	8447A	8352A	8452A	8357A	8457A	8362A	8462A	8372A	8472A	8382A	8482A	8392A	8492A	8398A-56	8498A-56
8.0	17/32"	8313A	8413A	8323A	8423A	8328A	8428A	8333A	8433A	8343A	8443A	8348A	8448A	8353A	8453A	8358A	8458A	8363A	8463A	8373A	8473A	8383A	8483A	8393A	8493A	8398A-80	8498A-80
11.2 (ELO)	5/8"	8314A	8414A	8324A	8424A	8329A	8429A	8334A	8434A	8344A	8444A	8349A	8449A	8354A	8454A	8359A	8459A	8364A	8464A	8374A	8474A	8384A	8484A	8394A	8494A	8398A-112	8498A-112
14.0 (ESFR)	3/4"	-	-	-	-	-	-	-	-	-	-	-	-	-	-	-	-	8365A	8465A	8375A	8475A	8385A	8485A	8395A	8495A	8398A-140	8498A-140
25.2	-	-	-	-	-	-	-	-	-	-	-	-	-	-	-	-	-	-	-	-	-	-	-	-	-	8398A-252	8498A-252

Most Popular Models



## Dimensions



	Size	A	B	C	D	E
Bronze	1"	11" (279 mm)	14" (356 mm)	4 <sup>3</sup> / <sub>4</sub> " (120 mm)	6 <sup>1</sup> / <sub>2</sub> " (165 mm)	14 <sup>1</sup> / <sub>2</sub> " (369 mm)
	1 <sup>1</sup> / <sub>4</sub> "	12" (305 mm)	14 <sup>1</sup> / <sub>4</sub> " (362 mm)	4 <sup>3</sup> / <sub>4</sub> " (120 mm)	6 <sup>3</sup> / <sub>4</sub> " (171 mm)	15 <sup>1</sup> / <sub>2</sub> " (394 mm)
	2"	12" (305 mm)	14 <sup>3</sup> / <sub>4</sub> " (374 mm)	5" (127 mm)	7" (178 mm)	15 <sup>1</sup> / <sub>2</sub> " (394 mm)
Steel	2"	14" (356 mm)	12 <sup>1</sup> / <sub>2</sub> " (318 mm)	5 <sup>5</sup> / <sub>8</sub> " (143 mm)	6" (152 mm)	17" (432 mm)
	2 <sup>1</sup> / <sub>2</sub> "	14" (356 mm)	14 <sup>1</sup> / <sub>4</sub> " (362 mm)	5 <sup>5</sup> / <sub>8</sub> " (143 mm)	6" (152 mm)	17 <sup>1</sup> / <sub>8</sub> " (435 mm)
	3"	14" (356 mm)	15" (381 mm)	5 <sup>7</sup> / <sub>8</sub> " (149 mm)	6 <sup>3</sup> / <sub>8</sub> " (162 mm)	17 <sup>1</sup> / <sub>8</sub> " (435 mm)
	4"	14" (356 mm)	19" (483 mm)	8" (203 mm)	6 <sup>7</sup> / <sub>8</sub> " (175 mm)	17 <sup>1</sup> / <sub>8</sub> " (435 mm)
	6"	14" (356 mm)	21 <sup>1</sup> / <sub>8</sub> " (537 mm)	9 <sup>1</sup> / <sub>8</sub> " (232 mm)	7 <sup>7</sup> / <sub>8</sub> " (200 mm)	17 <sup>1</sup> / <sub>8</sub> " (435 mm)
	8"	14" (356 mm)	23 <sup>3</sup> / <sub>8</sub> " (587 mm)	10 <sup>1</sup> / <sub>8</sub> " (257 mm)	8 <sup>7</sup> / <sub>8</sub> " (225 mm)	17 <sup>1</sup> / <sub>8</sub> " (435 mm)

Sizes have been rounded to the highest millimeter

- 1<sup>1</sup>/<sub>4</sub>", 1<sup>1</sup>/<sub>2</sub>", and 2" RiserPACK models feature a TEST<sub>AND</sub>DRAIN model 2500/2511 with 1" THD x THD inlet and outlet.
- 2<sup>1</sup>/<sub>2</sub>" and 3" RiserPACK models feature a TEST<sub>AND</sub>DRAIN model 2500/2511 with 1<sup>1</sup>/<sub>4</sub>" THD x THD inlet and outlet.
- 4"-8" RiserPACK models feature a TEST<sub>AND</sub>DRAIN model 2500/2511 with 2" GRV x GRV inlet and outlet.

**NOTE:** UL and FM standards for sprinkler system pressure relief valves require relief valves to operate within a range of their ratings. FM requires a relief valve to OPEN at a pressure no less than 85% of their rating and UL requires OPENING at a pressure no greater than 105% of their rating. Both standards require the relief valves to CLOSE within a percentage below OPEN. Choose the relief valve comparing static pressure to 90% of the relief valve's rating to determine the estimated minimum OPENING and 80% of the relief valve's rating for approximate maximum CLOSING. The relief valve should be installed where it is easily accessible for maintenance. Care should be taken that the relief valve CANNOT be isolated from the system when the system is operational. A relief valve should NEVER have a shutoff valve or a plug downstream of its outlet.

USA Patent and Other Patents Pending

For use on wet fire sprinkler systems.

### Manifold Sizes

1<sup>1</sup>/<sub>4</sub>", 1<sup>1</sup>/<sub>2</sub>", 2", 2<sup>1</sup>/<sub>2</sub>", 3", 4", 6", and 8"

### Orifice Options

2.8K, 4.2K, 5.6K, 8.0K, 11.2K (ELO),  
14.0K (ESFR), and 25.2K

### Connections

Inlet.....THD, GRV, or THD x GRV  
Outlet.....THD, GRV, or THD x GRV

### Installation Orientation

Horizontal  
Vertical

### Rating

300 PSI

### Compliance

NFPA 13  
NYC-BSA No. 720-87-SM

### Approvals

UL/ULC (EX27218, EX4019,  
EX4533 & EX6266)  
FM



**AGF Manufacturing Inc.**  
100 Quaker Lane, Malvern, PA 19355

Phone: 610-240-4900  
Fax: 610-240-4906

[www.agfmfg.com](http://www.agfmfg.com)

Job Name: \_\_\_\_\_

Architect: \_\_\_\_\_

Engineer: \_\_\_\_\_

Contractor: \_\_\_\_\_